



## Advance Your Pavement Management Strategies and Increase ROI

Pavement Analyst is an enterprise software that lets you make better investment decisions for pavement maintenance, preservation, rehabilitation, and replacement by predicting future performance.

### With Pavement Analyst, You Can:



#### Manage and Mitigate Risks

Identify risk exposure by asset category, compile a risk register, and evaluate prioritized risks for planning, analysis, and mitigation.



#### Improve Management Strategies

Create optimal work plans using predictive modeling to determine the best time to apply a preventive treatment that keeps pavement in good repair.



#### Preview Investment Outcomes

Use multiple what-if scenarios to see how you can achieve a specified performance target, or see how your budget is allocated to preservation strategies that maximize the return on investment (ROI).



#### Produce Meaningful Reports

Generate interactive reports that communicate the effects of your investment decisions and the performance of your network against various measures.



#### Optimize Work Plans

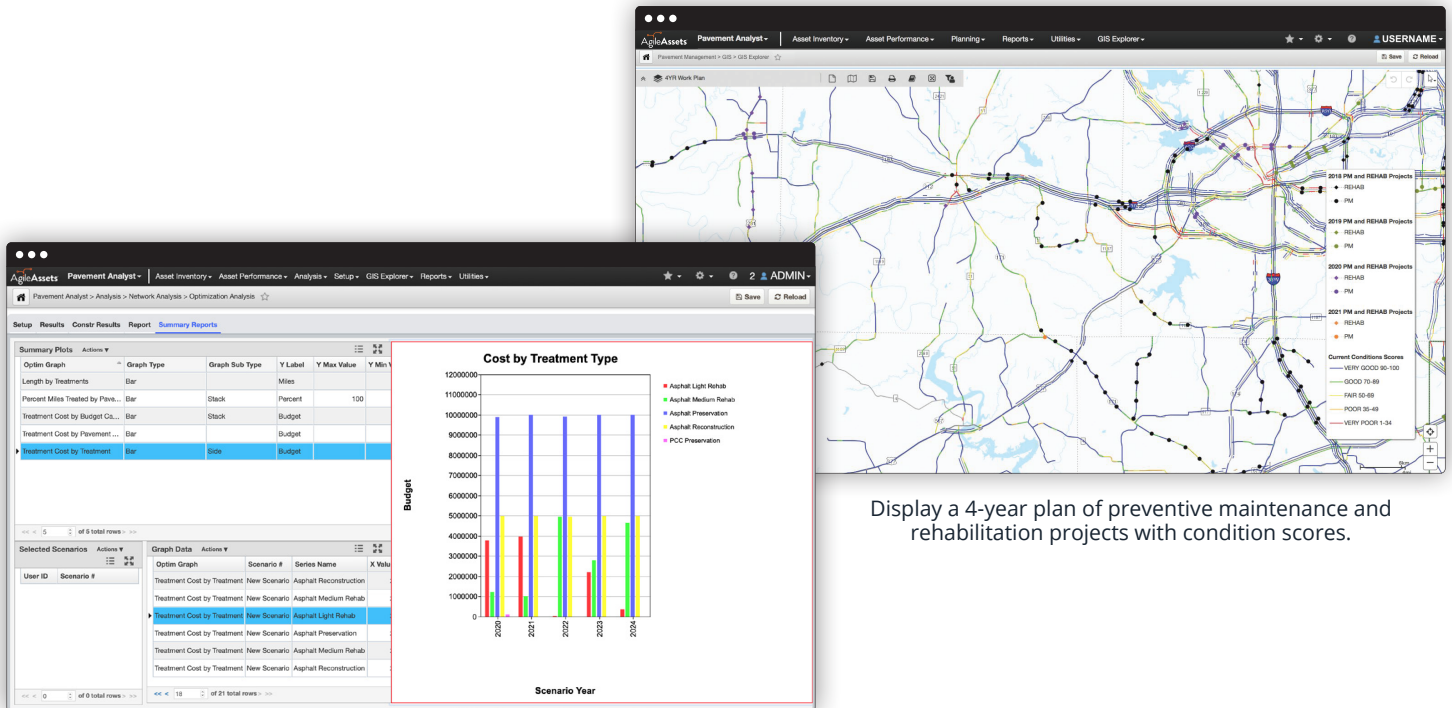
Align projects across multiple years to create efficient work plans that reduce effort and save money.

 **SaaS Solution**

Fast deployment • Strongest security • Seamless updates • Highest performance

# Features and Benefits

- **Multi-Constraint Analysis** – Add any number of user-specified constraints to your analysis beyond simple budget and performance goals.
- **Multi-Year Analysis** – Optimize your project portfolios with analysis across multiple years.
- **Analysis Scenarios** – Create multiple what-if scenarios for analysis comparisons to simplify forecasting and resource allocation.
- **Deterioration Models** – Project future level of service for specific pavement areas to help determine optimal maintenance strategies.
- **Visual Project Editing Tool** – Create work plans using an interactive project planner to quickly organize projects for best results.
- **User-Defined Decision Trees** – Optimize the decision making process by defining decision trees according to agency practices.
- **Optimized Work Plans** – Turn analysis results directly into optimized work plans.
- **GIS/LRS Integration** – Publish the results of planning and analysis directly to maps and your integrated Linear Referencing System.
- **Dynamic Charts** – Easily visualize projected levels of service with dynamic charts that break down data and show trends.
- **Flexible, Graphical Reporting** – Improve internal and external communication using easy-to-understand graphical reports.
- **Maintenance Program Interface** – Integrate with AgileAssets® Maintenance Manager™ to create and execute maintenance plans, extending the value of your asset management system.



Display a 4-year plan of preventive maintenance and rehabilitation projects with condition scores.

Summarize scenario analysis results, including the cost of recommended treatments for each analyzed year.



## Learn More

For more information about transportation asset management strategies and solutions, contact us at [+1 800.877.8734](tel:+1800.877.8734) or [AgileAssets.com](http://AgileAssets.com).

